



INSTALLATION INSTRUCTIONS

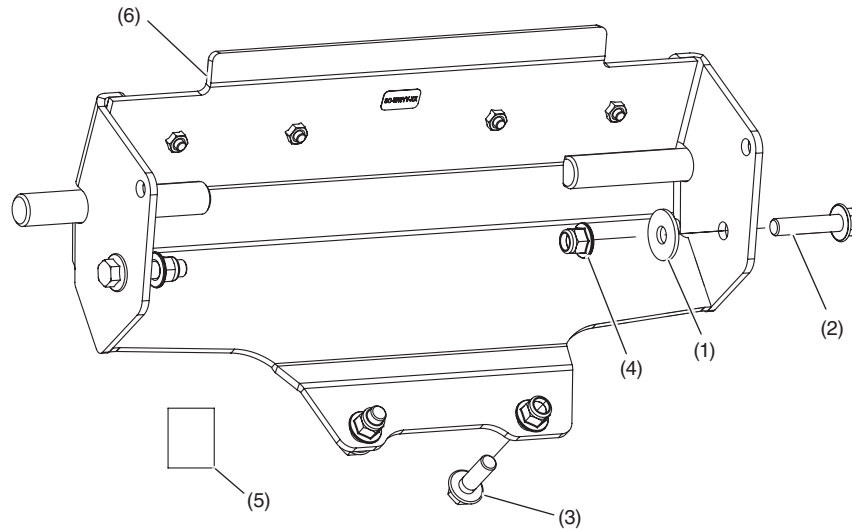
Accessory
**PLOW MOUNT KIT
P/N 0SL73-HL5-A00**

Application
SXS520M2

Publication No.
MII 17623
Issue Date
December 2020

Honda Dealer: Please give a copy of these instructions to your customer.

PARTS LIST



No.	Description	Qty
(1)	Fender washer	2
(2)	14 × 45 mm hexagonal flange bolt	2
(3)	14 × 30 mm hexagonal flange bolt	2
(4)	14 mm hexagonal flange nylon nut	4
(5)	Installation Instructions URL	1
(6)	Mount plate assembly	1

TORQUE CHART

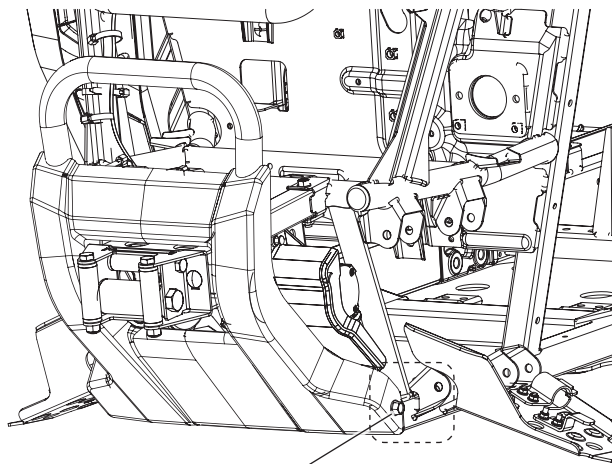
Item	N-m	kgf-m	lbf-ft
10 × 16 mm hexagonal flange bolt	10	1	7.3
14 × 45 mm hexagonal flange bolt	68	6.9	50

TOOLS REQUIRED

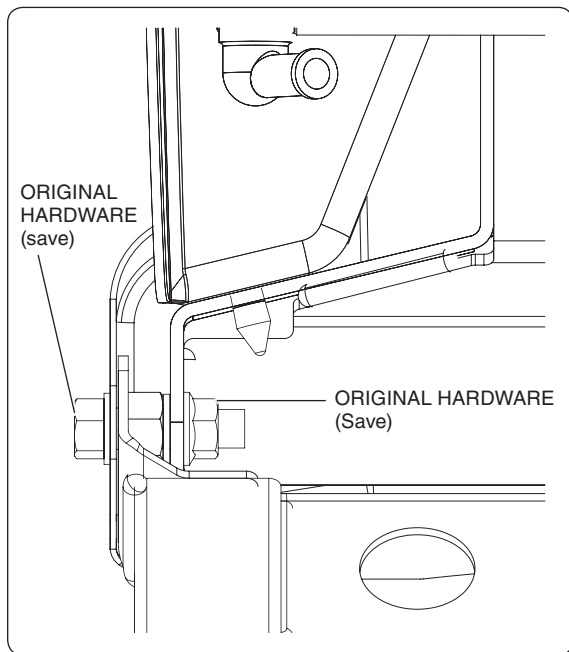
- Socket (10 mm)
- Socket (14 mm)
- Ratchet
- Torque wrench

INSTALLATION

1. Remove original hardware from the winch mount and bumper.



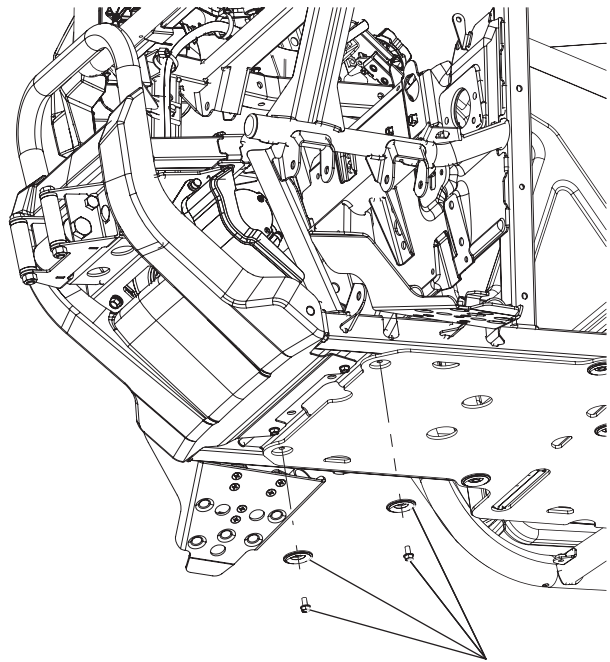
ORIGINAL HARDWARE
(save)



ORIGINAL
HARDWARE
(save)

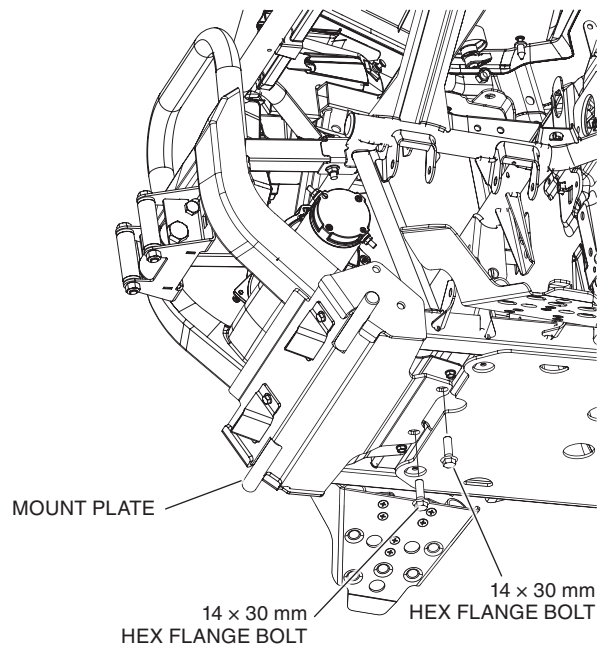
ORIGINAL HARDWARE
(Save)

2. Remove the two front screws of the plastic skid plate.



ORIGINAL HARDWARE
(Reuse at step 7)

3. Install the mount plate on the vehicle using two 14 x 30 mm hex flange bolts and two 14 mm hex flange nylon nuts (not shown). Hand tighten.



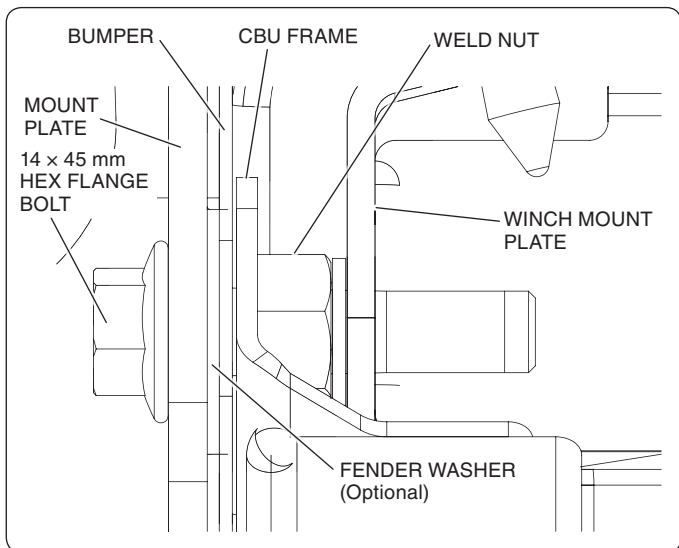
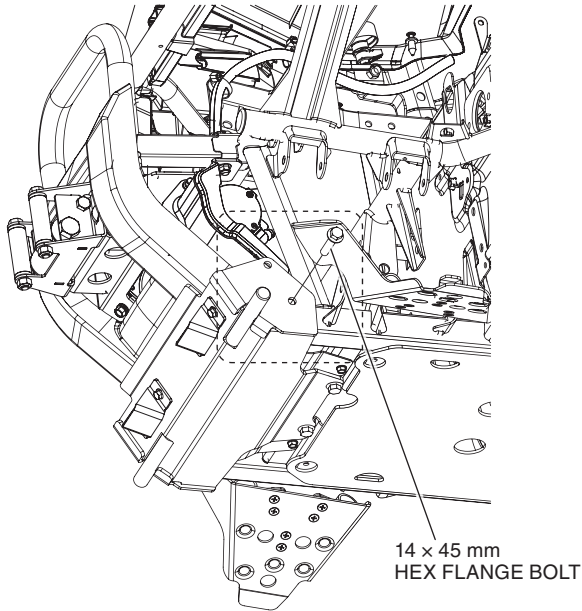
MOUNT PLATE

14 x 30 mm
HEX FLANGE BOLT

14 x 30 mm
HEX FLANGE BOLT

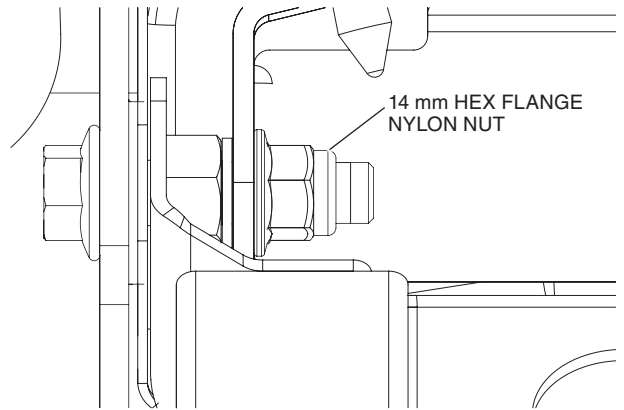
4. Install one 14 × 45 mm hex flange bolt into the existing weld nut on each side of the CBU frame.

NOTE: If there is a gap between the bumper and the mount plate, install a fender washer between them to fill the gap. Check both sides.



5. While holding the mount plate up against the bumper and frame, tighten the bolts to the values specified in the TORQUE CHART.

6. Install one 14 mm hex flange nylon nut on each side of the 14 × 45 mm hex flange bolts and tighten the bolts to the values specified in the TORQUE CHART.



7. Install the two front screws of the plastic skid plate removed at the step 2.

